

*Statement from 23.06.2021*

### Statement Regarding The EDELRID TRIPLE LOCK Buckle

*EDELRID is providing information on the current situation regarding irregularities with Triple Lock buckles on EDELRID tree care harnesses.*



*017 Black with oasis button | 017 Black with antracite button*

Since mid-2020, EDELRID has been advised of 32 cases (as of June 18, 2021) showing defects with the 28 mm Triple Lock (TL) buckles on the TREEREX harness. In the majority of these cases, the plastic housing on the buckle had loosened, and in some cases, the housing had completely detached itself from the mounting.

Since the first case, EDELRID has been heavily involved in investigating any potential risk and the cause of the problem, finding that the "three-way operation" of the buckle opening mechanism makes it impossible to open a TL buckle with a harness put on and pulled tight.

After a risk to users was ruled out, the case was assessed as a production irregularity, affected buckles were replaced, and the buckle design was modified to rule out any similar occurrences in the future, regardless of the specific cause. This updated version will be used in the manufacture of subsequent TREEREX harnesses from 2021 onwards.

On June 9, 2021, a 45 mm TL buckle was discovered for the first time in the USA on a NOTCH branded arborist harness where the buckle housing had detached itself from the supporting mounting.

While investigating this case, as part of a collaboration with NOTCH and the suppliers of the buckle components, EDELRID has now been able to pinpoint the probable **cause of the defect**:

In all buckles scrutinized to date, changes in the riveting process were found, but they were always within the intended tolerance range. Furthermore, the buckles examined did not show any deviations in incoming goods inspections and standard tests. During the investigation of the current case, it was found that the stiffness of the plastic housing exhibited minimal variations. These fluctuations are negligible due to the nature of the processes. However, if a rivet that is at the lower limit of the permissible tolerance range is used in a housing whose stiffness is also at the limit of the tolerance range, the attachment of the housing to the mounting is no longer fully ensured.

EDELRID has been using the TL buckles in its harness designs since 2016. The riveting process has been modified as of buckle batch ZU0119. As things stand today, buckles from previous batches are not affected by the current problem. No comparable cases

have been reported for other harnesses with integrated TL buckles, which have been used in many applications since 2019. We suspect that application-specific peculiarities of tree care additionally exacerbate the occurrence of the defect.

A detailed description of the design and use of the TL buckle can be found here:

[DOWNLOAD PDF](#)

**Note: We have added the additional information noted here to the end of this PDF.**

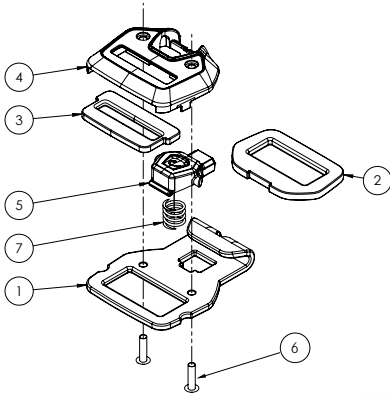
EDELRID is currently working on a technical solution to the problem for harnesses supplied with TL buckles to prevent further defects and complaints and has already revised the design for future production batches.

Until this technical solution is available (expected September 2021), EDELRID asks users of harnesses with TL buckles to check these buckles for integrity before each use and report any irregularities [service@edelrid.de](mailto:service@edelrid.de).

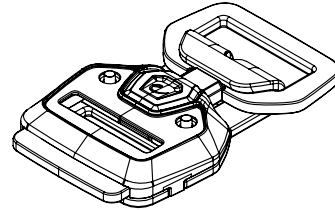


## Construction and operation of the Triple Lock buckles

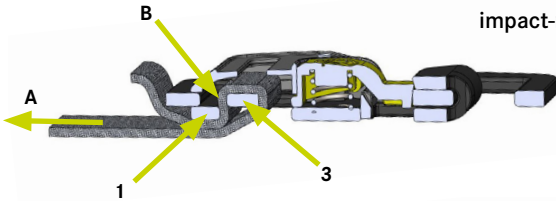
The EDELRID Triple Lock buckle is a PPE harness buckle that can be completely opened and adjusted. The opening mechanism consists of a hook and a frame element, which can be separated from each other by independent movements. This adjustment mechanism is made of a two part slide block element, under a plastic coverage.



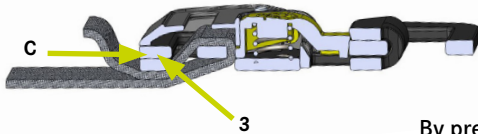
- 1 - Base plate / hook part
- 2 - Frame part
- 3 - Slide block element
- 4 - Plastic coverage
- 5 - Push button
- 6 - Rivets
- 7 - Compression spring



The metallic elements 1-3 belong to the load-bearing elements of the buckle and are made of a KTL-coated, high-strength steel alloy. The plastic case and the snap fasteners are made of impact-resistant, glass fiber reinforced polyamide.



By pulling on band A it moves the slide block frame 3 and the band is clamped at B, between slide block frame 3 and base plate 1.



By pressing the slide block frame 3 into the plastic coverage C and raising the buckle lightly, the clamping of the belt is released and the belt can be adjusted.

Loosening the tape:



VIDEO



hold the buckle



press slide block frame in the housing



slightly lift the buckle and pull the tape out of the buckle

Wrong:



VIDEO



If the buckle is edged up to the slide block frame only, the clamping of the tape is not undone and the tape cannot be pulled out of the buckle.

This mechanism prevents that the buckle is loosen inadvertently by accidentally getting stuck.

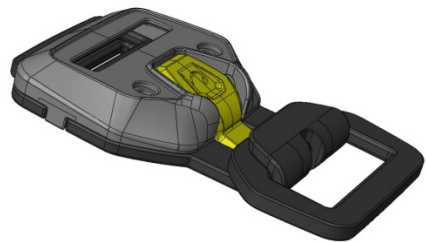
## Opening and closing of the Triple Lock buckle



**1. hold the buckle**



**2. press the push button**



**3. slide and tilt the frame**



**4. pull the hook out of the frame**



**VIDEO**